

Ringraumdichtungen

RRD-1 = einfach dichtend
 RRD-2 = doppelt dichtend

Werkstoffe:

Scheiben:

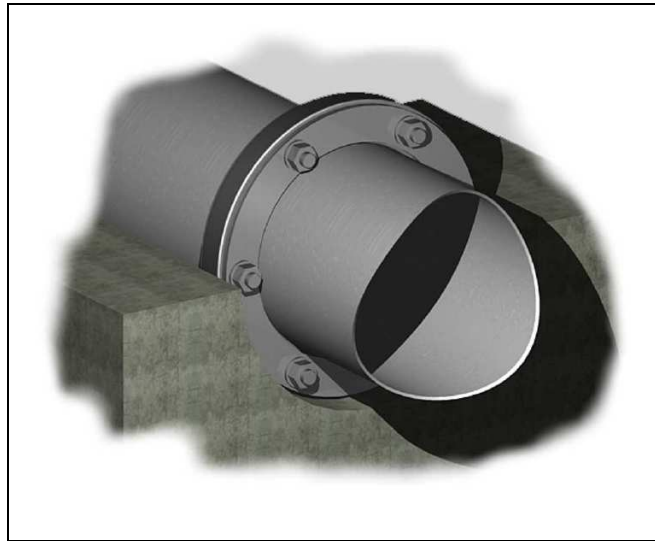
Edelstahl Wst.-Nr. 1.4541 / 1.4571
 s=5mm

Schrauben und Muttern:

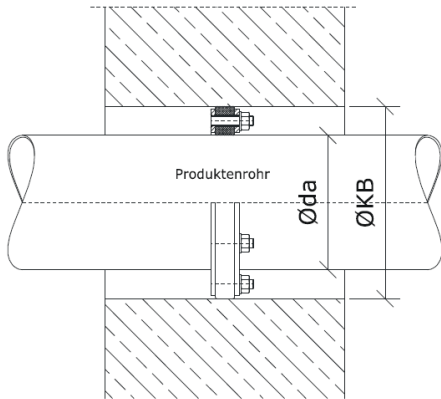
V4A / V2A

Dichtung:

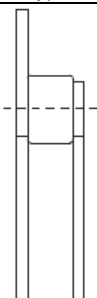
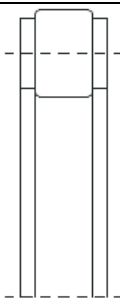
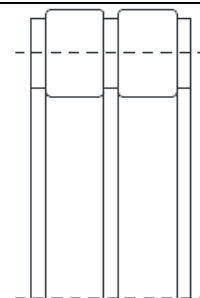
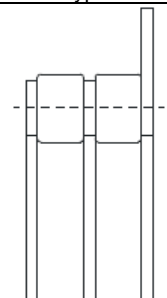
EPDM / s=20mm / Härte=50Shore



Abmessungen:

	Produktenrohr da (mm)	Kernbohrung KB (mm)
	60,3	125
76,1	125	
88,9	150	
114,3	200	
139,7	200	
168,3	250	
219,1	300	
273,0	350/400	
323,9	450	
355,6	450/500	
406,4	500	
508,0	600	

Typen:

Typ E/B Muttern am Großring: Typ B Muttern am zentr. Ring: Typ E	Typ A	Typ C	Typ D/F Muttern am Großring: Typ D Muttern am zentr. Ring: Typ F
			
einfach dichtend		doppelt dichtend	

